

Accepting New Landscape Management Clients. CALL TODAY! (239) 643-6124 x1



# CLIPPINGS

## HURRICANE IRMA EDITION

### Company Newsletter

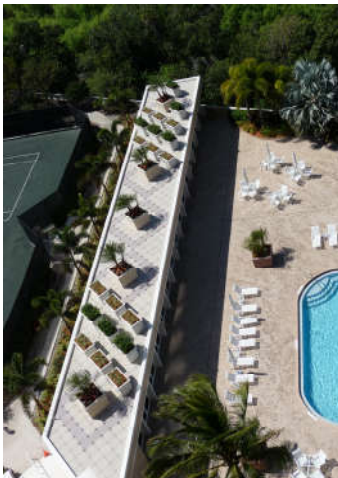
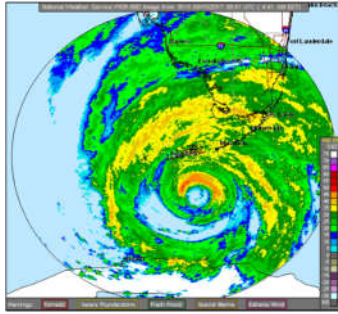
*Service,  
Quality &  
Expertise*

12745 Livingston Road  
Naples, FL 34105  
(239) 643-6124 x1  
(239) 643-6413 facsimile

## WE ARE LANDSCAPE RENOVATION SPECIALISTS!

After IRMA its important to rely on a company who specializes in landscape renovations and enhancements. For nearly 20 years, Landscape Florida has been implementing our unique programs to help our landscape management clients to improve their properties. Our specific programs range from itemized landscape assessments & planning to implementation & after-care. We have provided these programs for projects ranging in size from small homeowner projects to miles of roadways and entire property renovations. In the wake of hurricane IRMA we rapidly responded to our clients and their needs in dealing with the damage, devastation, clean-up and we are now working on assessment and planning!

Get on the road to recovery! Now is the time, in the wake of Hurricane IRMA, to hire a company and a team experienced in renovating and repairing landscapes! We provide these services to our valued landscape management clients. To become a Landscape Florida landscape management client and learn more about these programs contact us today at [\(239\) 643-6124 x1](tel:(239)643-6124) or at [EricE@LandscapeFlorida.com](mailto:EricE@LandscapeFlorida.com) or text our hotline at (239) 450-5944.



Landscape Florida takes on small projects, large renovations and unique enhancements. Whatever your needs, we can help you! Contact us today to get the recovery process started!

## HURRICANE TREE & PALM RECOVERY PROGRAM:

We have all seen the damage and destruction caused by IRMA, particularly to our beloved trees and palms here in SWFL. Landscape Florida cares about our special and unique landscapes and we have a program to assist valuable trees and palms in their recovery from this event. Our program consists of performing liquid nutrient injections into the root systems providing rapid uptake into the vascular system of the tree or palm. These nutrient injections also help support the trees and palms to regenerate roots, foliage and put them back on the path to being healthy! If you are interested in this program for your trees, palms or other specimen materials please contact us today at **(239) 643-6124 x1** or [ClientRequest@LandscapeFlorida.com](mailto:ClientRequest@LandscapeFlorida.com) or via text to our Client Request Line at **(239) 450-5944**



**GROWING ON  
THE GULF!**



Landscape Florida is proud to be associated with and provide our full range of services to some of the most beautiful properties, associations and landscapes in Southwest Florida. We are always interested in expanding on our group of valued clients and would be happy to meet with you personally to discuss your needs and our abilities.